

Specifications

Model	LX-NZ30	
Device	0.47" DMD (1920 x 1080)	
Resolution	3840 x 2160	
Lens	1.6x manual zoom/focus lens f=14.3 ~ 22.9 mm, F 1.809	
Lens shift	Manual: Vertical ±60 %, Horizontal ±23 %	
Projection display size	60~200-inch	
Light source	BLU-Escent (Laser diode) (Life: Approx. 20,000 hours)	
Brightness	3,300lm	
HDR	Compatible (HDR10 / HLG)	
Input terminals	HDMI	2 (HDCP2.3 compatibility)
	DisplayPort	1
	USB*1	1
Output terminals	USB Type A	1 (Power supply 5 V/1.5 A)
	Trigger	1 (Mini jack, 12 V/0.1 A)
Control terminals	RS-232C	1 (D-sub 9-pin)
	LAN	1 (RJ-45, 10BASE-T/ 100BASE-TX)
Power consumption	360 W (Standby: 0.5 W)	
Fan noise	29 dB/34 dB (Eco/Normal)	
Power requirement	AC 100 ~ 240 V, 50/60 Hz	
Dimensions (W x H x D)	405 x 145.8 x 341 mm (15-7/8" x 5-3/4" x 13-1/2")	
Weight	5.9 kg (13.0 lbs.)	

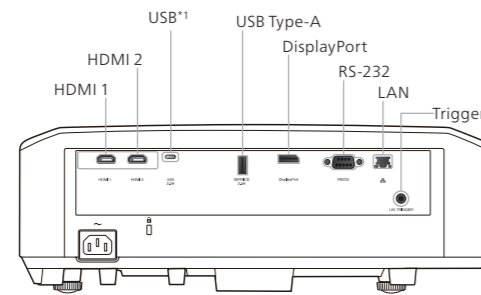
*1: Certified USB Type-C cable compatible with DP Alt mode is required for connection. Connection is enabled for cables with Type-C connector on both ends. Connection with all DP Alt Mode compatible devices is not guaranteed.

Projection Distance Chart

Screen diagonal (inch)	Display size (16:9)				Projection distance*2			
	Width		Height		Wide		Tele	
(inch)	(inch)	(cm)	(inch)	(cm)	(inch)	(cm)	(inch)	(cm)
80	70	177	39	100	94	240	151	384
90	78	199	44	112	106	270	170	432
100	87	221	49	125	118	300	189	480
110	96	244	54	137	130	330	208	528
120	105	266	59	149	142	360	227	576
130	113	288	64	162	154	390	246	624
140	122	310	69	174	165	420	265	672
150	131	332	74	187	177	450	283	720
160	139	354	78	199	189	480	302	768
170	148	376	83	212	201	510	321	816
180	157	398	88	224	213	540	340	864
190	166	421	93	237	224	570	359	912
200	174	443	98	249	236	600	378	960

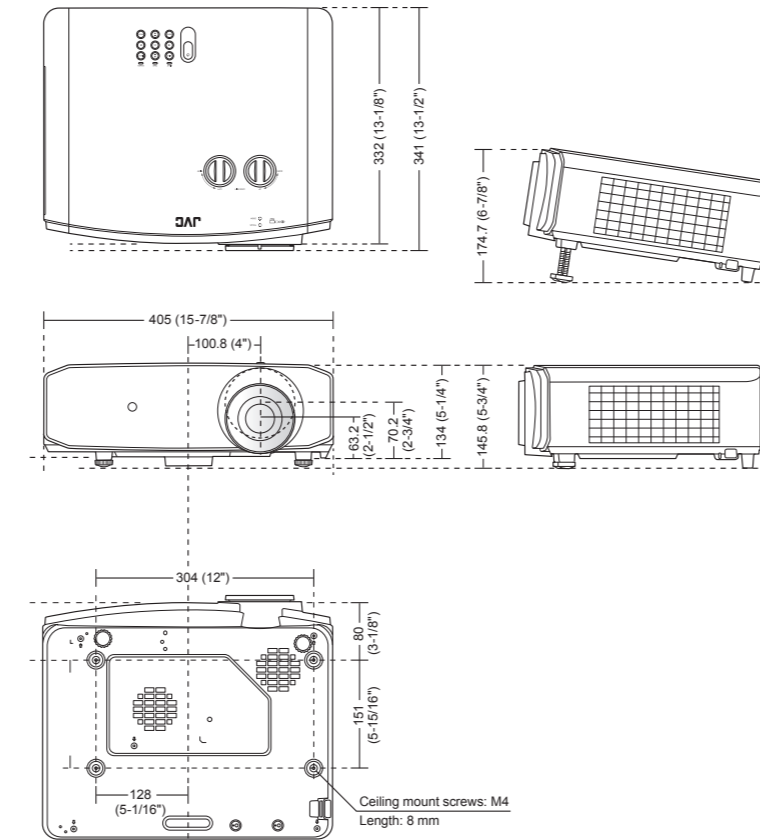
*2: Projection distances are design specifications, so there is ±5% variation.

Connectors



External Dimensions (W x H x D): 405 x 145.8 x 341 (15-7/8" x 5-3/4" x 13-1/2")

Unit: mm (in)



• BLU-Escent is a registered trademark of JVCKENWOOD Corporation. • DLP, the DLP logo, and DMD are registered trademarks of Texas Instruments. • Ultra HD Blu-ray™ is a trademark or registered trademark of Blu-ray Disc Association • HDMI, the HDMI logo and High-Definition Multimedia Interface are registered trademarks of HDMI Licensing LLC. • USB-C™ and USB TYPE-C™ are trademarks and/or registered trademarks of USB Implementers Forum, Inc. • All other brand or product names may be trademarks and/or registered trademarks of their respective owners. Note that the ™ and © marks are not mentioned in the body text of the catalog. • An additional payment is required for installation of the projector, if necessary. • All pictures in this brochure are simulated. • Design and specifications are subject to change without notice. • Any rights not expressly granted herein are reserved.

Copyright © 2023, JVCKENWOOD Corporation. All Rights Reserved.

JVC

DISTRIBUTED BY

www.jvc.eu
www.jvc.net/asia

For more information, scan or click on the QR code



PJC-22022EG

JVC is the trademark or registered trademark of JVCKENWOOD Corporation.



DLP Projector
LX-NZ30



Expand your Excitement.

4K
UHD

DLP
TEXAS INSTRUMENTS

HDR
High Dynamic Range

BLU Escent



From high-definition 4K/HDR to large-screen gaming, bring bright and smooth images to your living room. Broaden your applications and enjoyment.

Enjoy 4K/HDR movies, streaming video, and high frame rate gaming right in your living room with the LX-NZ30, featuring BLU-Escent, a laser light source that delivers 3,300-lumen brightness and a long 20,000-hour life, as well as support for high frame rate input at up to 2K 240Hz. The new model, which is full of projection technologies, broadens your usage and enjoyment of large-screen home theater projection.

DLP Projector
LX-NZ30 **4K UHD** **DLP** **HDR** **BLU-Escent**

- BLU-Escent laser light source: brightness of 3,300lm and long life of approx. 20,000 hours
- Full of big-screen gaming features: Low latency, 4K60Hz/2K240Hz signal support and more
- Rich input terminals: HDMI (HDCP2.3 compliant) x 2, DisplayPort, USB
- Highly flexible installation is possible with wide lens shift (60% vertical, 23% horizontal) and zoom (1.6x)
- Geometric correction functions realize easy and flexible installation
- Available in black and white



BLU-Escent

Bright and Real High-definition Images Right in Your Living Room

The LX-NZ series has always delivered high-quality images even in environments where light cannot be completely shut out, but the new LX-NZ30 features an even brighter blue laser diode light source, BLU-Escent which combines high brightness of 3,300 lumens with a long life of 20,000 hours to enable enjoyment of 4K images even in brighter environments. This brighter light source also improves peak brightness when projecting HDR content, allowing users to enjoy more realistic images with a wider range of sensations.

Dynamic Light Source Control for Realistic Image Reproduction

Laser light sources can control light output instantaneously, enabling dynamic brightness adjustment with minimal delay. The Blu-Escent laser light source enables control of laser output optimized according to the brightness of each scene, reproducing images that resemble human perception.

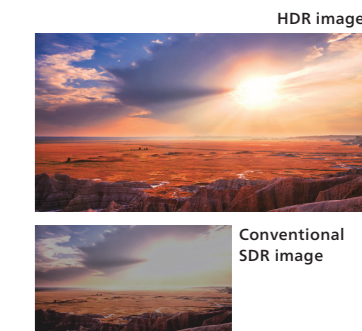
Bright and Colorful 4K Images

The bright DLP projection system featured on the LX-NZ30 uses a 0.47-inch DMD device to display 4K resolution (3840x2160), which is four times higher than Full HD (1080P), in full detail. The bright, vividly colored, high-definition 4K images allow viewers to enjoy a sense of presence and depth as if actually being there in the same place.



Automatic Detection of HDR Signals to Deliver Realistic and Dynamic High-Definition Images

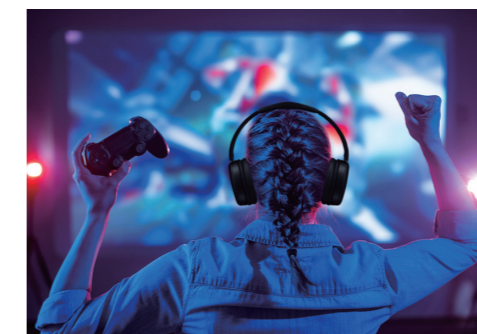
In addition to the HDR10 format used in Ultra HD Blu-ray™ and streaming services, the LX-NZ30 also supports the HLG (Hybrid Log Gamma) format used in broadcasting and other applications. When each of these signals is detected, the projector automatically switches to the optimal picture quality mode to project high-quality, realistic, dynamic images.



Picture simulated.

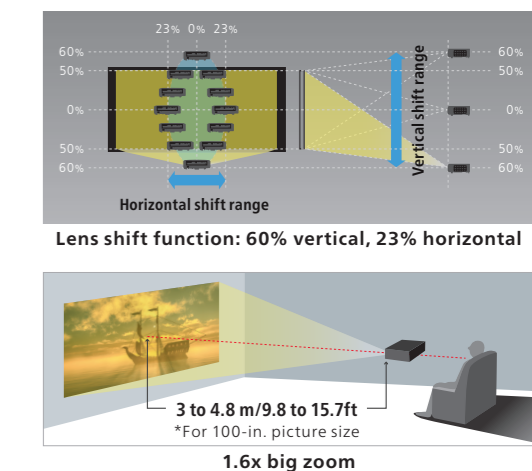
High Frame Rate and Low Latency for Large Screen Gaming on Screen Sizes Well Beyond 100 Inches

To support high frame rate content beyond conventional 60Hz, the system supports up to 2K 240Hz input. What's more, when the projector is set to the low latency mode, latency is less than 1.5 frames (at 4K60Hz). This enables smooth, low-lag images even on screens much larger than 100 inches, offering large-screen gaming as a new way to enjoy home theater. In addition, the DisplayPort port allows for direct connection from a compatible PC.



Installation Wherever You Want. Let the Wide Lens Shift and 1.6x Zoom Do the Work.

Even in a room with limited space, the LX-NZ30 can be installed with a minimal footprint and maximum flexibility, from the ceiling to the shelf and just about anywhere in between. In addition to a wide lens shift range of 60% vertical and 23% horizontal, this projector is equipped with a 1.6x zoom that enables a projection distance of 3 to 4.8 m at 100 inches, making it flexible for a variety of installation environments without sacrificing image quality.



Geometric Distortion Correction Further Enhances Ease of Installation

The LX-NZ30's lens shift and zoom functions enhance ease of installation, and it is now equipped with a new geometric correction function that corrects geometric distortions. In addition to trapezoidal correction for horizontal, vertical, and tilt adjustment, the LX-NZ30 is also equipped with corner adjustment for four-corner adjustment and warping correction for distortion correction that can be moved arbitrarily at cross points, enabling an even higher degree of flexibility in installation.

